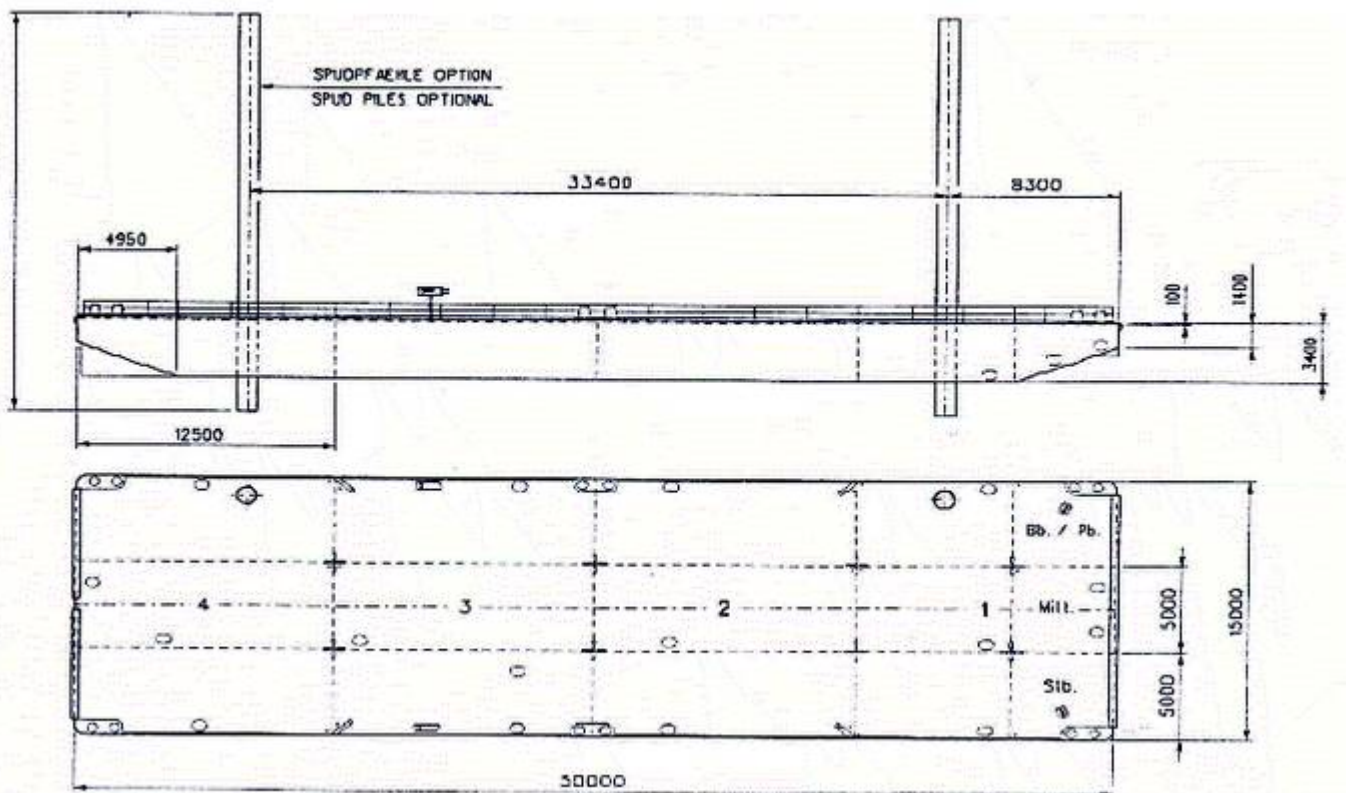


pontoon "LP03"

L = 50 m x B = 15 m x H = 3,4 m



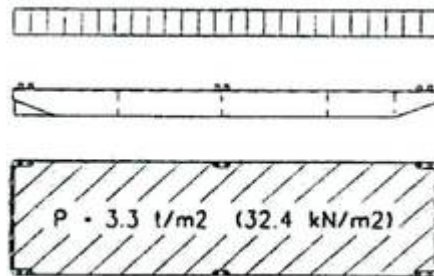
LÜHRS Schifffahrt oHG

General

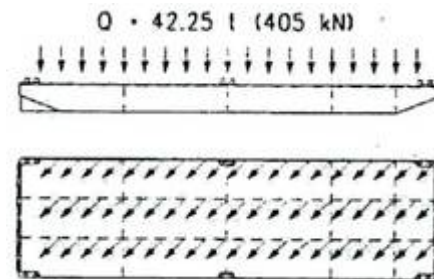
Built	1976 - Cuxhaven, Germany
Registered	Hamburg, Germany
Flag	Germany
Classification	Germanischer Lloyd
GRT	733
NRT	220
Dimensions	Length o.a.: 50,00 m
	Breadth: 15,00 m
	Depth: 3,40 m
Spuds length	2 pcs each 28 m length, diam. 0,65 m

Loading Conditions

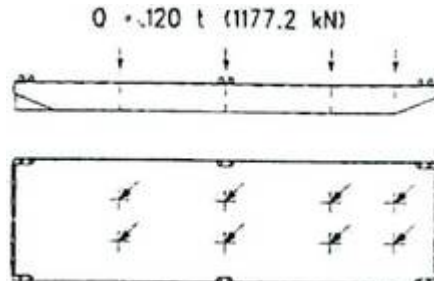
Loading Condition 1
Area loading



Loading Condition 2
Loading on frame

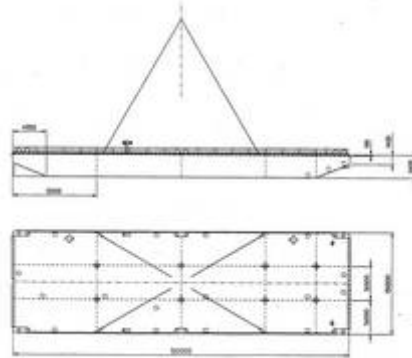


Loading Condition 3
Single loading on crosspoints



LÜHRS Schifffahrt oHG

Test Pontoon "LP03"



Max Test Weight Water Ballast 100% 870 t
 Dead Weight 330 t
 Max. Test Weight 1200 t

Approx for other test weight: 10 cm filling of ONE tank means approx 6 t of weight increase

Single Tanks Fillings Seawater specific mass 1.025 t per qm

Test weight	Tanks: 1 (Stb, Bb) 4 (Stb, Bb)	Tanks: 2 (Stb, Bb) 3 (Stb, Bb)	Tanks: 1, 2, 3, 4 Midship
[t]	[m]	[m]	[m]
330	empty	empty	empty
400	empty	0,27	empty
450	empty	0,47	empty
500	empty	0,66	empty
540	empty	0,82	empty
600	empty	1,06	empty
650	empty	1,25	empty
700	empty	1,45	empty
750	empty	1,64	empty
800	0,31	1,64	empty
850	0,59	1,64	empty
900	0,85	1,64	empty
950	1,1	1,64	empty
1000	1,33	1,64	empty
1050	1,55	1,64	empty
1100	1,76	1,64	empty
1150	1,8	1,8	empty
1200	1,9	1,9	empty

Dead Weight Scale

LÜHRS Schifffahrt oHG

Seawater
specific mass: 1.025 t per sqm

Dead weight (t)	Draft (m)	
2.054,70	3,30	___ Deck
1.824,00	3,00	
1.439,60	2,50	
1.312,80	2,335	___ full load condition displ. 1.642,8 t
1.132,20	2,10	
978,80	1,90	
870,00	1,76	
753,90	1,60	
680,40	1,50	
607,70	1,40	
535,80	1,30	
464,60	1,20	
394,20	1,10	
324,60	1,00	
255,70	0,90	
187,60	0,80	
120,20	0,70	
53,60	0,60	
0,00	0,52	___ light condition displ. 330 t