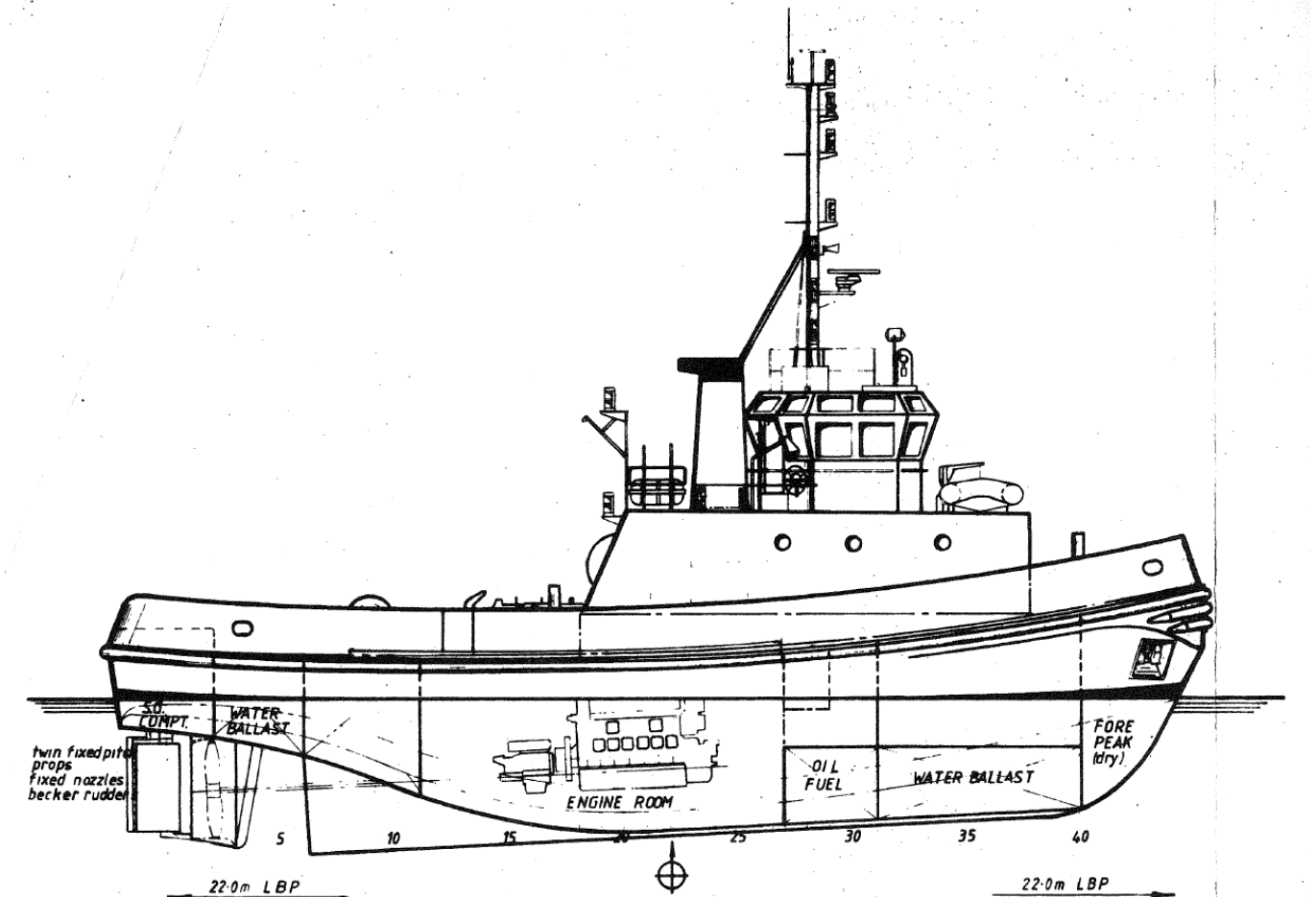


# LÜHRS Schifffahrt OHG

## MT "TWISTER"

26,4 t steady Bollard Pull - 1.900 hp - built 1988



### General

Built	1988 Chocrane Shipbuilders Limited	
Registered	Hamburg, Germany	
Flag	Germany	
Classification	LR +100A1 TUG + LMC UMS	
GRT	173	
NRT	51	
Crew	5	
Dimensions	Length o.a.:	24,70 m
	Breadth:	7,30 m
	Draft:	3,30 m - 3,60 m

# LÜHRS Schifffahrt OHG

---

<b>Towing</b>	<b>Bollard pull</b>	<b>28 tbp cont.</b>
	Winch	1x Gemmell & Frow twin drum
	Sea towing wire	450 m, 34 mm Ø
	Harbour towing wire	120 m, 32 mm Ø
<b>Tank Capacities</b>	Fuel - MGO	39,0 cbm
	Fresh Water	18,0 cbm
	Ballast Water	49,0 cbm
<b>Fuel Cons.</b>	Maximal	5 cbm / 24 h
<b>Accommodation</b>	Total Capacity	7 (1x single cabin 3x double cabin)
<b>Communication/ Equipment</b>	Radar	Furuno
	Compass	Furuno
	Autopilot	Anschütz
	Navtex	Furuno
	GPS	Furuno
	VHF	2x Sailor
	MF/HF	1x Sailor
	Inmarsat	
	Fleet Broadband	Sailor
	Chartplotter	Simrad
<b>Propulsion System and Main Engine</b>		Twin screw in fixed Nozzle with Becker Rudder powered by 2x Ruston 6AP 230 M each 6 Cylinder