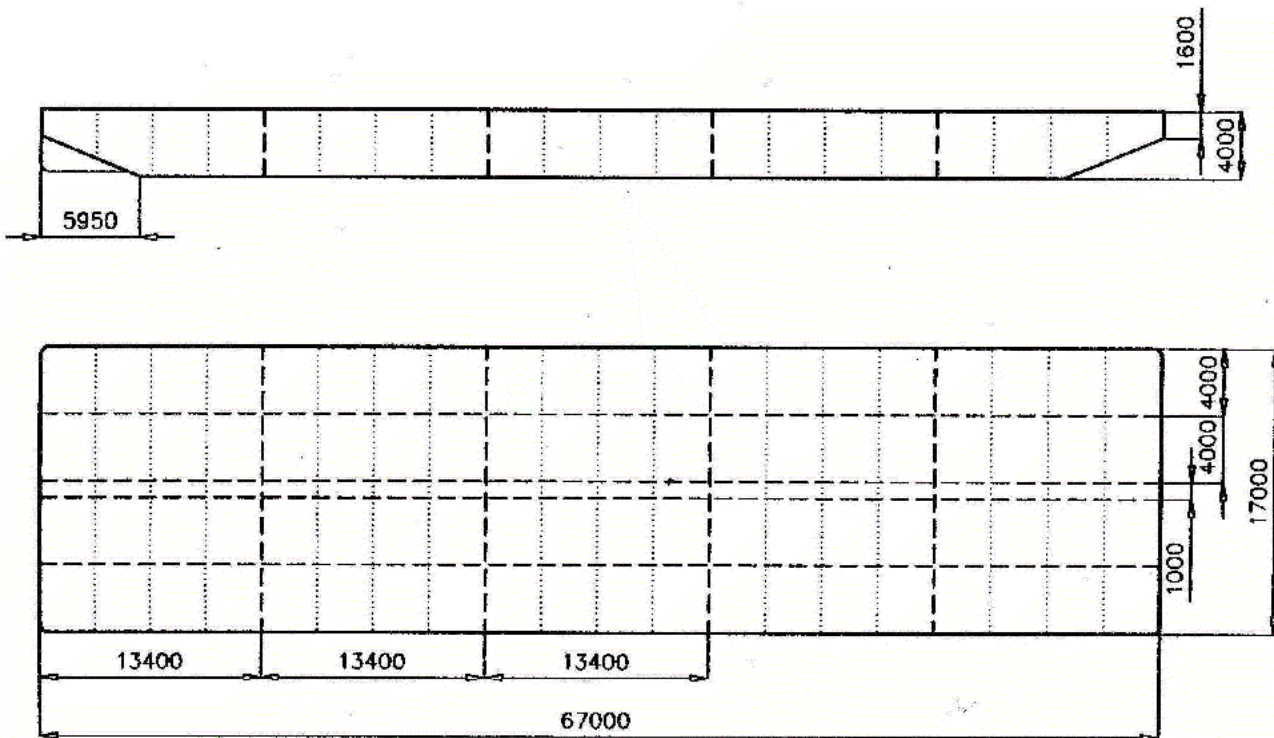


pontoon "LP04"

L = 67 m x B = 17 m x H = 4 m



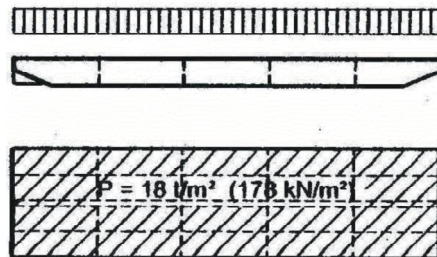
LÜHRS Schifffahrt oHG

General

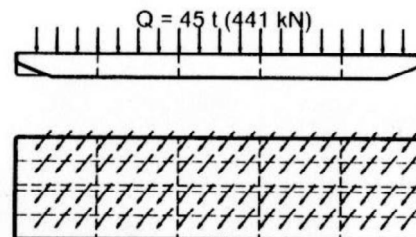
Built	1978 - Vlaardingen, Netherland
Registered	Hamburg, Germany
Flag	Germany
Classification	LR + 100 AN Ponton Lloyds Register
GRT	1173
NRT	351
Dimensions	Length o.a.: 67,10 m
	Breadth: 16,96 m
	Depth: 4,00 m

Loading Conditions

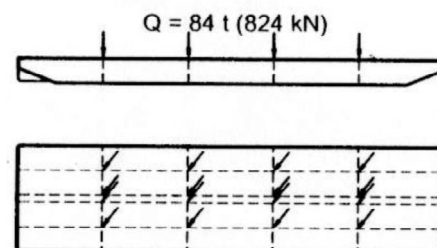
Loading Condition 1
Area loading



Loading Condition 2
Loading on frame

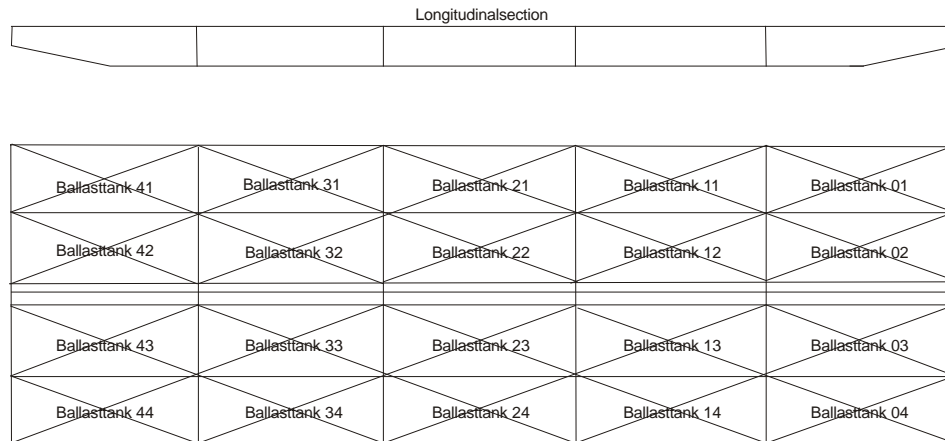


Loading Condition 3
Single loading on crosspoints



LÜHRS Schifffahrt OHG

Ballastplan



Tankvolumen und - Mittelpunktskoordinaten

Tank- No	V	x	z	Tank- No	v	x	z
	cbm	m	m		cbm	m	m
01	181,57	59,57	2,19	23	209,69	33,50	2,00
02	181,70	59,57	2,19	24	209,69	33,50	2,00
03	181,70	59,57	2,19	31	209,69	20,10	2,00
04	181,57	59,57	2,19	32	209,69	20,10	2,00
11	209,69	46,90	2,00	33	209,69	20,10	2,00
12	209,69	46,90	2,00	34	209,69	20,10	2,00
13	209,69	46,90	2,00	41	185,17	7,43	2,19
14	209,69	46,90	2,00	42	181,70	7,43	2,19
21	209,69	33,50	2,00	43	181,70	7,43	2,19
22	209,69	33,50	2,00	44	181,57	7,43	2,19

LÜHRS Schifffahrt oHG

Dead weight scale

Seawater
specific mass: 1.025 t per
cbm

Dead weight (t)	Draft (m)	
3.636	4,00	___ Deck
3.486	3,70	
3.019	3,30	
2.821	3,13	___ full load condition displ. 3.512 t
2.669	3,00	
2.319	2,70	
1.969	2,40	
1.720	2,20	
1.476	2,00	
1.269	1,85	
1.120	1,70	
945	1,55	
774	1,40	
605	1,25	
440	1,10	
331	1,00	
223	0,90	
116	0,80	
0,0	0,69	___ light condition displ. 691 t